



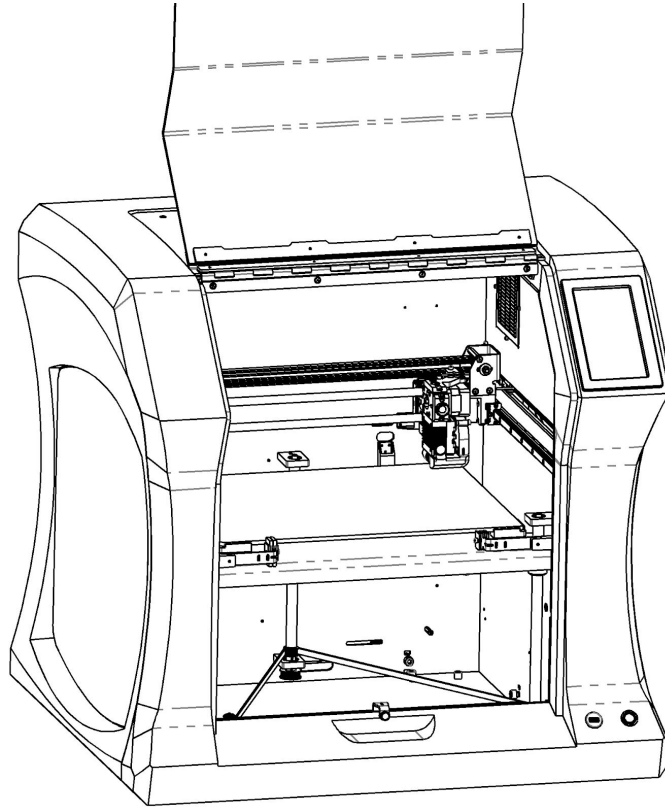
| | |
|-------------------|--------------------------------|
| Title | Tech Bed Assembly Installation |
| Models | Bolt and Bolt PRO |
| Version | 1.1 |
| Revision date | 01-08-2019 |
| Expected duration | 30 minutes |

| Description |
|---|
| This guide explains how to install a Tech Bed assembly on the Leapfrog Bolt or Leapfrog Bolt PRO. |

| Guideline |
|---|
| <p>It is recommended to read through and understand these instructions before attempting the procedure.</p> <p>After installing the Tech Bed Assembly, we strongly recommend to adjust the Z-min endstop. Instructions can be found in the Leapfrog support knowledge base.</p> |

| Tools |
|------------------|
| Allen Wrench 4 |
| Wrench 8 |
| Cutters / pliers |

Step 1 Preparations



Before starting this procedure. Make sure both printheads and bed are at room temperature.

- | | |
|----|--|
| a. | Make sure the machine is switched off. |
| b. | Remove the power cable. |
| c. | Open the lid. |

Step 2 Disconnecting the print bed

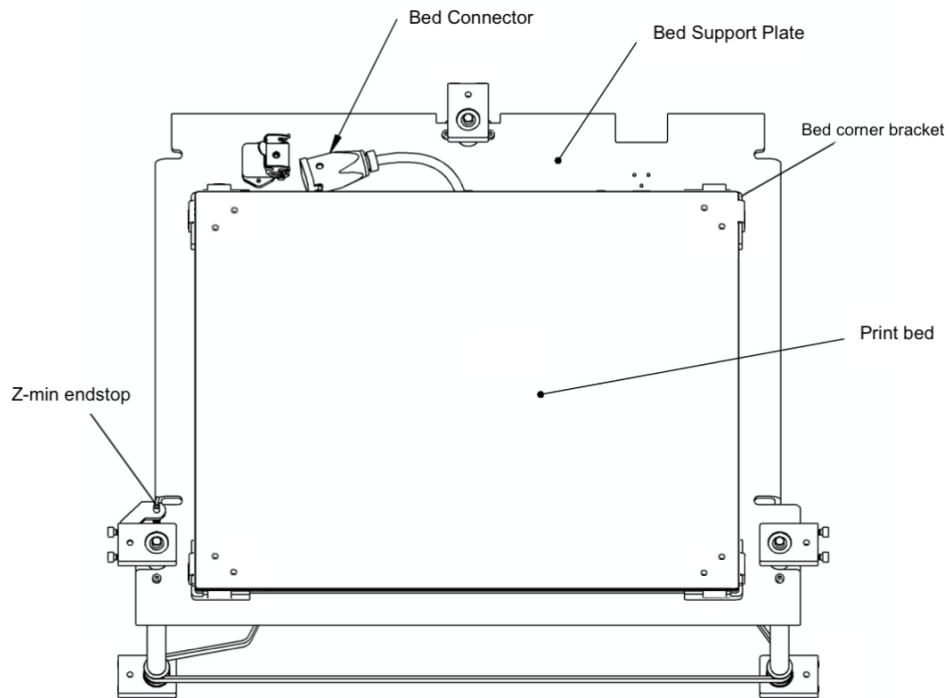
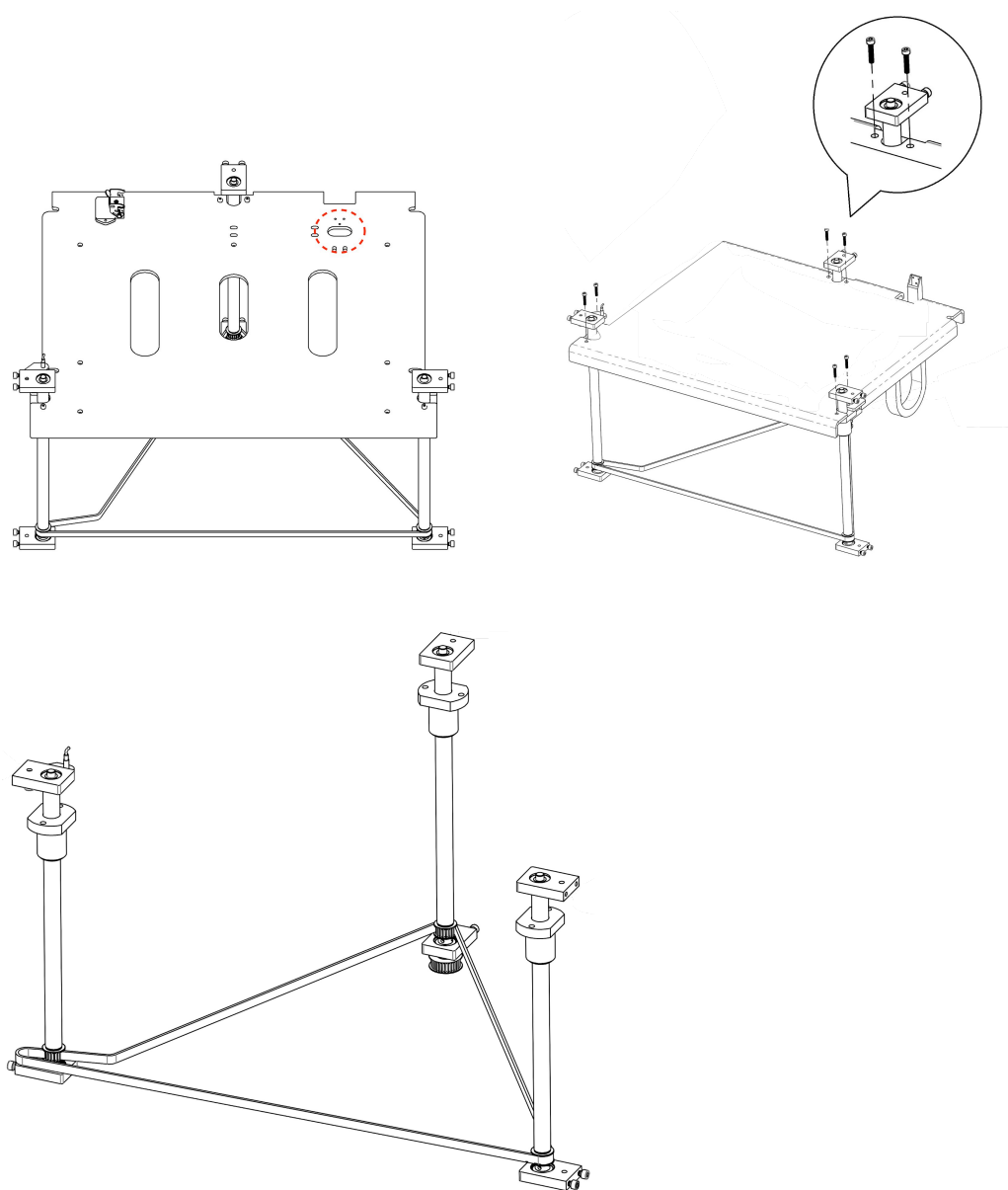


Image may slightly be different when uninstalling an older model. The same procedure can be followed.

- | | |
|----|---|
| a. | Disconnect the Bed Connector or bed wiring. |
| b. | Loosen the black knurled grip knob underneath each bed corner bracket (four in total) |
| c. | Remove the print bed from the bed support plate. |

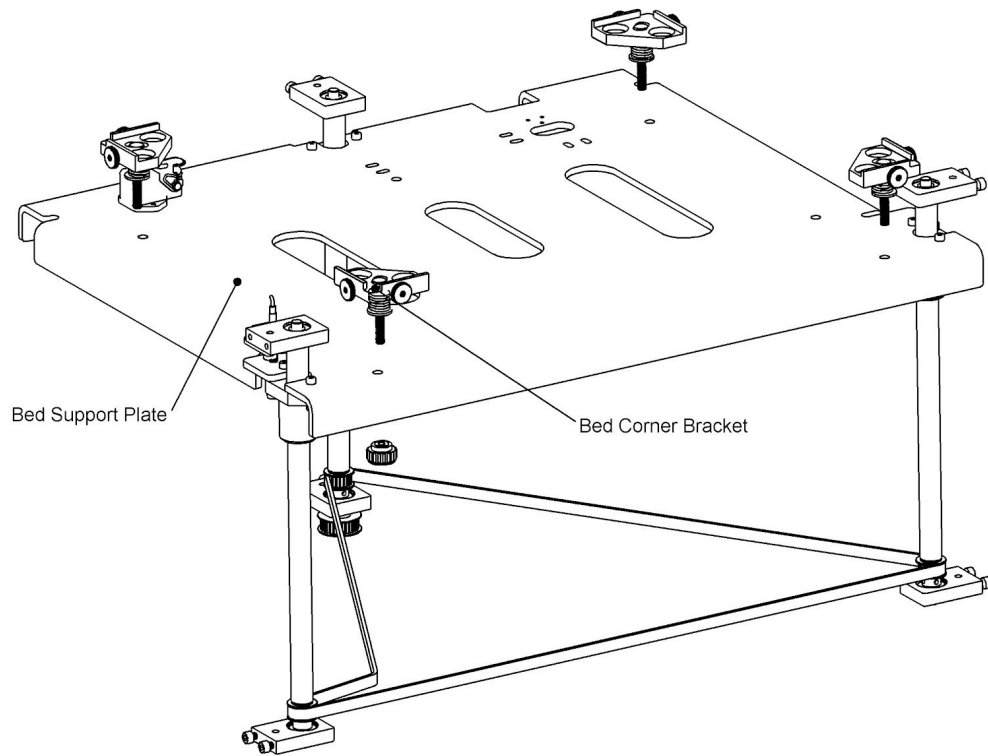
Step 3 Replacing the bed support plate



This step is only necessary when replacing the bed support plate.

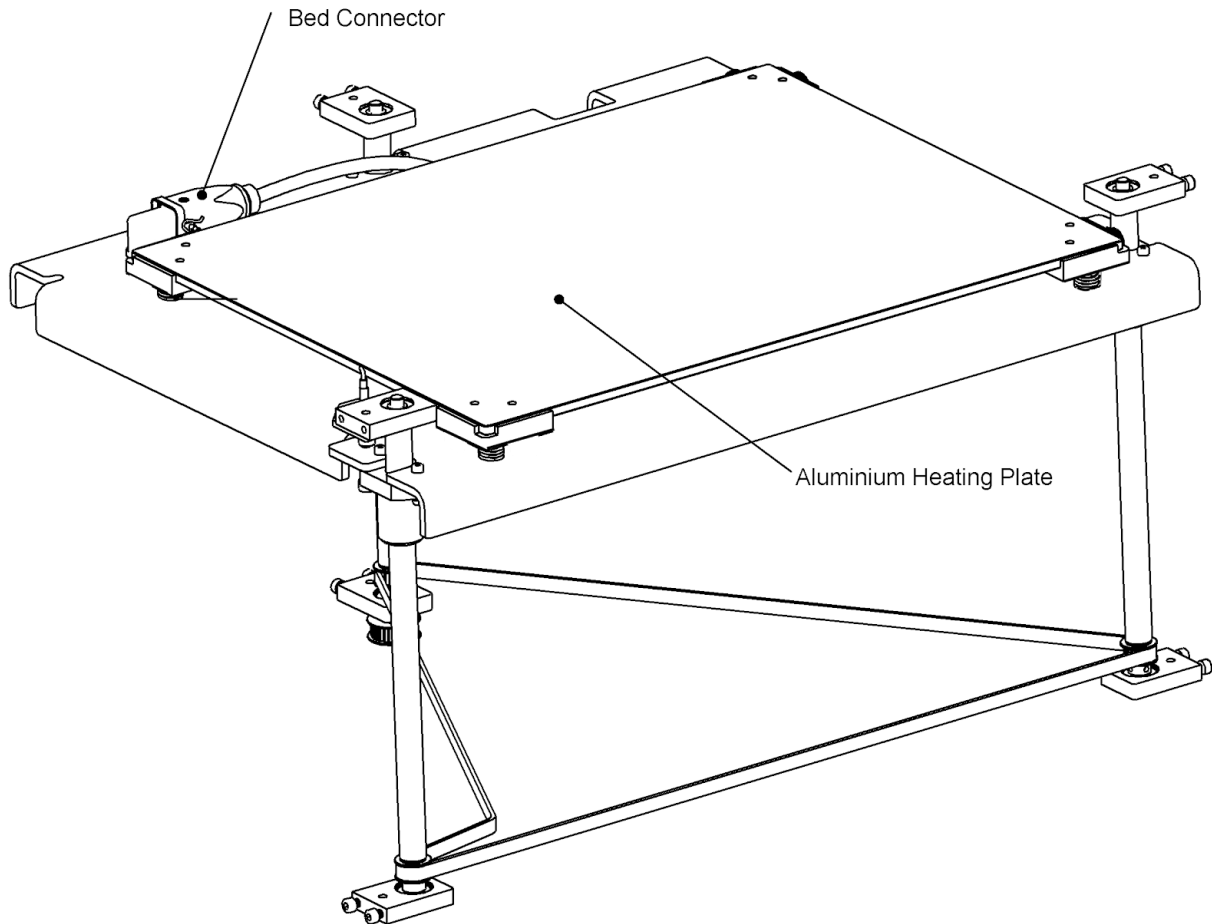
| | |
|----|---|
| a. | Unscrew the cable dragchain from the bed support plate. |
| b. | Loosen the bed support plate from each spindle (6 bolts in total). Using Allen Wrench 4 and Wrench 8. |
| c. | Remove the bed support plate from the printer |
| d. | Place the new bed support plate. |
| e. | Attach the cable dragchain to the new bed support plate. |

Step 4 Installing the corner brackets



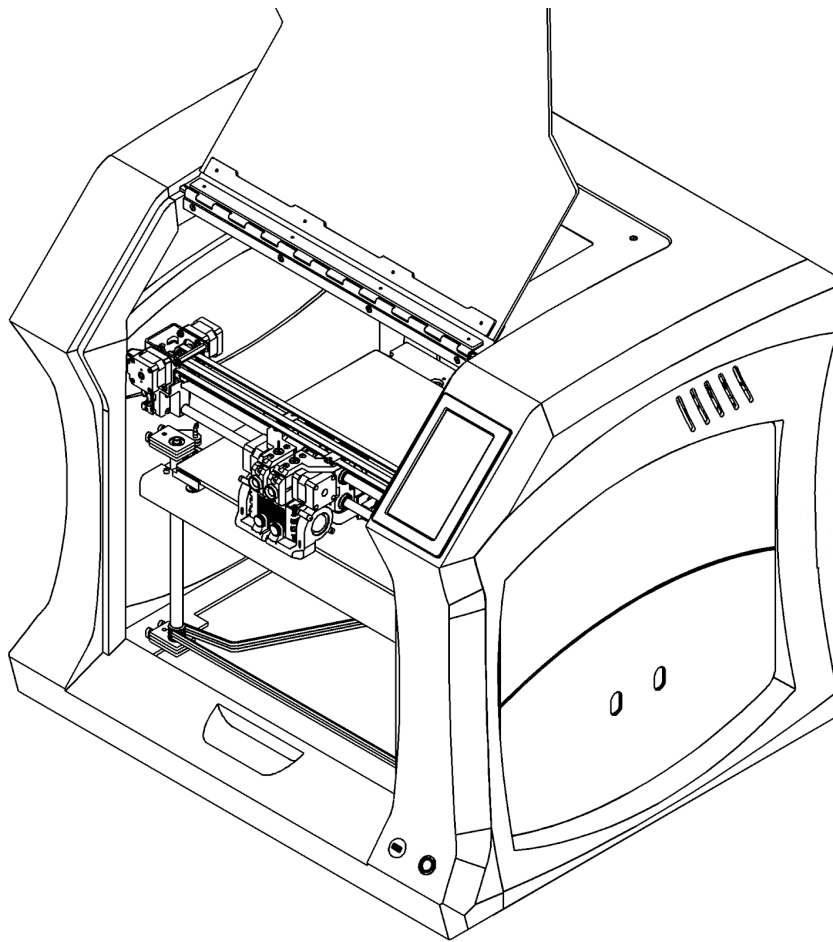
- | | |
|----|--|
| a. | Install all four Corner Brackets. Insert the threaded part downwards into the corresponding hole in the Bed Support Plate. The Washer should be placed on the top, between spring and bed support plate. |
| b. | Once the Corner Bracket is placed correctly, Tighten / lock the Knurled Grip Knob for all four corners to lower each corner completely. Please do not use excessive force. |

Step 5 Placing the Aluminium Heating Plate



- | | |
|----|---|
| a. | Place the Aluminium Heating Plate on to the corner brackets. Make sure the print bed is tightened with both bolts on each corner bracket. (8 in total). |
| b. | Connect the Bed Connector or bed wiring. |

Step 6 Final steps



a. Switch on the machine

b. Navigate to settings / calibrate bed and follow the procedure

In case your previous print bed was glass we strongly recommend, re-adjusting the Z-min endstop sensor. Instructions on this procedure can be found on the Leapfrog Support Page. Look for Knowledge base / Maintenance / Adjustment: Z-min endstop.